



BILLY PUGH X-904 PERSONNEL TRANSFER BASKET

A personnel basket is the most common method used to transfer personnel from boat to platform or platform to boat. Your transfer will be safe if you follow established procedures and recognize that you, as a passenger, have the responsibility for your own safety and that of your fellow passengers.

Before any attempt is made to transfer personnel, clear instructions will be given to all persons involved. If any individual(s) feel unsure or unsafe at anytime they may refuse transfer and/or utilize “**STOP WORK AUTHORITY**”.

If any individual(s) are suffering from acute sea sickness, vertigo or feel unconfident, special precautions should be taken to ensure safe transfer (e.g. utilizing a stokes stretcher secured to the basket in the area provided).

Boarding & Departing Procedures

1. Don and properly fasten a Personal Flotation Device (PFD) - Work Vest.
2. Place hand carried items (e.g. overnight bag, laptop computer, etc.) in the netted baggage area prior to boarding. Heavy or large material(s) (e.g. process equipment, supply boxes, large tool boxes, etc.) shall be transferred in a cargo box or basket. **Note:** Do not place items in the netted baggage area that are capable of cutting/shearing/damaging the netting, nor place items in the stretcher area.
3. Carry nothing in your hands and be prepared to board the basket when directed by the rigger or deckhand in charge.
4. Take hold of the outer ropes, step onto the basket and position your feet as indicated by painted footprints on the basket floor. (**Do Not Attach** the quick release safety lanyard until you step into the basket)
5. Attach the quick release safety lanyard clip to the upper nylon strap of the PFD Work Vest between the stitching, **NOT** onto the PFD fastener. (The safety lanyard serves as a fall restraint and should not be considered fall protection)
6. Pass your arms around the inner rigging ropes, cross them for more grip and ensure to keep the quick release clip strap in one hand. The deckhand or rigger will signal the crane operator when the riders are properly secured.
7. Anticipating lifts and landings, bend your knees slightly to absorb any sudden movement or jarring of the basket. (The basket is equipped with rubber cushions on the bottom frame of the basket which will also help with jarring due to sudden stops)
8. Should the basket contact the boat at the top of a swell **DO NOT STEP OUT OF THE BASKET** – as you could fall as the boat drops away from the basket.
9. The basket should contact the boat at the bottom of a swell. Once it has landed securely on the boat pull the quick release strap, step off of the basket, secure your baggage and get clear of it.

Other Personnel Basket Safety Precautions

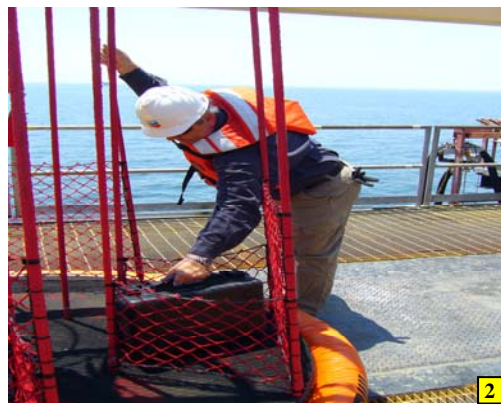
- * Be ready for the unexpected
- * Most accidents occur when landing on the deck of the boat
- * Load the basket with no more than the max. allowable passengers
- * Only (2) passengers at a time during rough seas transfers
- * Do not wear gloves or backpacks while riding basket
- * Stick around to help others, if needed
- * Never stand under a suspended load
- * Always get help when lifting heavy objects
- * Be alert for limited deck space in landing area
- * Required to wear hard hat while riding basket

In the event a person falls overboard, throw the individual a life ring, and keep your eyes on them at all times. At the same time, shout “MAN OVERBOARD” to get assistance and have someone sound the alarm.

Keep these tips in mind, treat the personnel basket with respect, and your transfer will be a safe one.



1



2



3 & 4

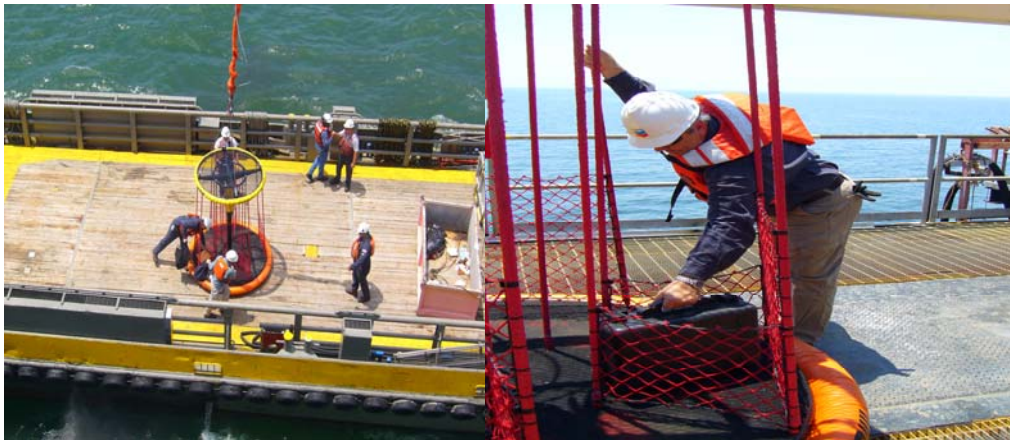


CLIP BETWEEN THE PFD STITCHING & STEP INTO THE BASKET BEFORE CLIPPING-IN

5 & 6



7 & 8



9

OTHER INFORMATION



Place the SAFETY CLIP onto the PFD NYLON STRAP between the STITCHING NOT on the FASTNER or as indicated



ALWAYS UTILIZE CARGO BASKETS FOR LARGE MATERIAL TRANSFERS

